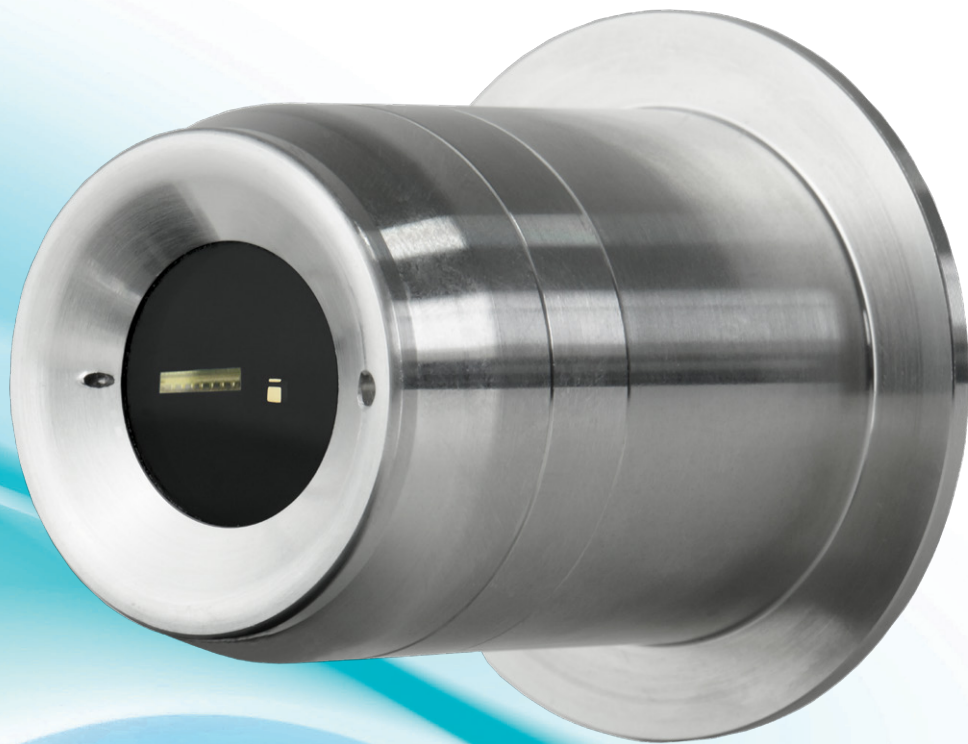


- L LABORATORY
- P PROCESS
- S SOFTWARE
- A AUTOMATION

SensoRef

Refractometric Sensor



SPECIFICATIONS

SensoRef

Measuring scales	Refractive Index (RI), Brix (Bx)
Measuring range	1.333 RI – 1.387 RI / 0 – 32 Bx
Resolution	0.0001 RI / 0.1 Bx
Precision	± 0.0007 RI / ±0.5 Bx
Wavelength	589 nm
Operating temperature	- 10 °C to +50 °C
Environmental temperature	-40 °C to +65 °C (recommended 5 °C - 35 °C, dry)
Wetted parts	Sapphire, stainless steel
Interfaces	RS485 (4 pin M8 plug), Modbus
Power supply	12-28 VDC
Current	max. 30 mA (at 24 V)
IP class	IP67
Process pressure (max.)	100 kPa (14,5 psi, 1 bar), max. 4 bar
Weight	220 g
Length	54 mm
Diameter	40 mm (DN40), handle diameter 54 mm

The **SensoRef** sensor from **Schmidt + Haensch** opens up a new field of miniaturization for process refractometers.

Thanks to the new optical design, the actual sensor has the size of a golf ball. Its design requires fewer parts, resulting in a highly efficient and compact construction. As a true sensor, it can be used in applications which can not be met by conventional refractometers.

If you are dealing with minimal volumes, space-limited installations or mobile operation, **Schmidt + Haensch** has another ultimate solution for you.

Designed to be easily integrated into your process controls, it can be connected directly to your PLC via Modbus or RS-232 interface. Integrated functions such as temperature measurement, cleanliness control and filling level detection ensure a self-monitoring system.

